



## PROPERTY OVERVIEW

**Location:**

1005 Laurel Oak Road, Voorhees NJ

**Size:**

32,858+/- sf

**Lease Price:**

\$10.00/sf NNN

**Sale Price:**

Call for Details

### Property Specifications

Tax ID	Block 161 Lot 27
Zoning	O3 - Office 3
Parking	175 spaces
Loading	One(1) tailgate door One(1) drive-in door

### Property Features

Located within the Voorhees Corporate Center

Building and Monument signage

Furniture included

Available immediately

**Kevin Burns**

856-324-5191

kburns@markeim.com

**Fred Berlinsky**

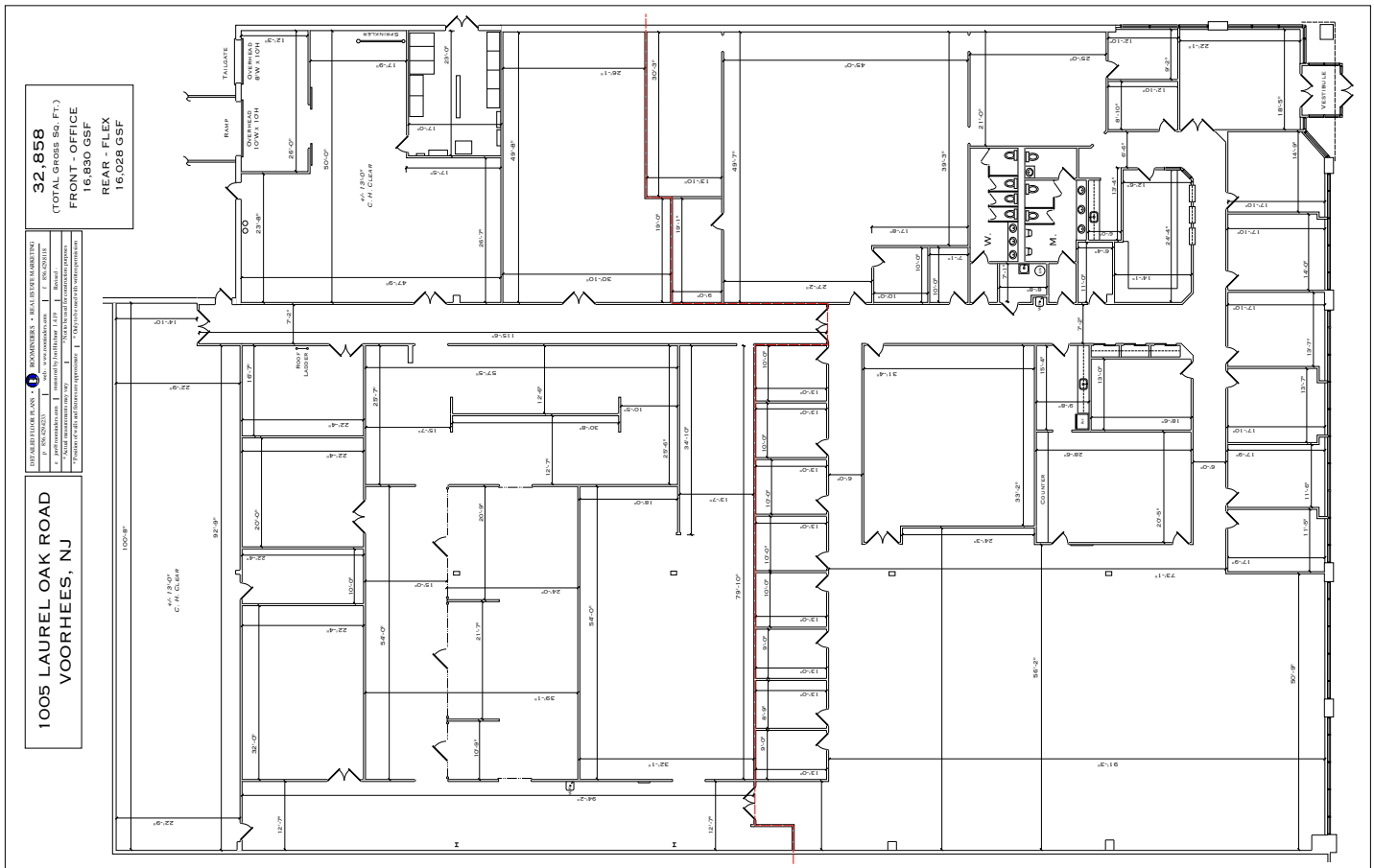
856-324-5190

fberlinsky@markeim.com

**Markeim Chalmers, Inc**

1415 Route 70 E Ste 500, Cherry Hill, NJ 08034

856-354-9700 • www.markeim.com



**Kevin Burns**

856-324-5191

kburns@markeim.com

**Fred Berlinsky**

856-324-5190

fberlinsky@markeim.com

**Markeim Chalmers, Inc**

1415 Route 70 E Ste 500, Cherry Hill, NJ 08034

856-354-9700 • www.markeim.com